

## WAINORA KAURI TRAIL – Coromandel

**260 Series Map:** Thames, T12

**Topo50 Map:** BB35 Hikuai

### How to get to START

In Thames turn right at the Toyota site and follow the road up the Kauaeranga Valley for approximately 13 km eastwards to the Kauaeranga Education Camp (**WP1**) which is about 7km up-valley from the information centre.

From the camp turn right on the gravel road for 50 metres to a Y-junction. Turn right uphill through the gate then pass up through the tent camp site on gravel road to find entrance to footpath at the top.

The location of the tramp is indicated and labelled opposite and can be seen as a red line near the top of sheet T12.

**Accommodation:** First rate accommodation at the Kauaeranga Education Camp hut with several dormitories, separate ladies and gents shower and toilets, gas fired hot showers, gas cooker with sufficient pots and pans (plus a toaster), huge efficient open fire with firewood supply and solar lighting throughout.

**Rough description:** An easy, three hour round trip to large Kauri tree with eight river / stream crossings – dry in the dry season. Overall there is an altitude gain and subsequent loss of about 290 metres with climbs on a steep, sometimes rocky path.

**Detail:** Leave Education Camp Site (**WP1** 134 masl) on to the road, go right and right again at a Y-junction (**WP2**) and through a gate and into tent camping area.

### Base camp



### The hut



At the top of the gravel road enter the woods on clearly marked Wainora Kauri footpath. The path is rough and rocky in places and there are several river / stream crossings on stepping stones – feet remain dry unless there is high water flow. The total distance to reach the tree is, as measured by GPS, 3km so the round walk is a fraction over 6km in total requiring between 2 – 3 hours walking.

### Kauri tree



The vegetation is very varied in this area having, in addition to the Kauri:

- Totara
- Kamalui
- Tawa
- Matai
- Rimu
- Manaka
- Red Beech
- Ferns of various sorts

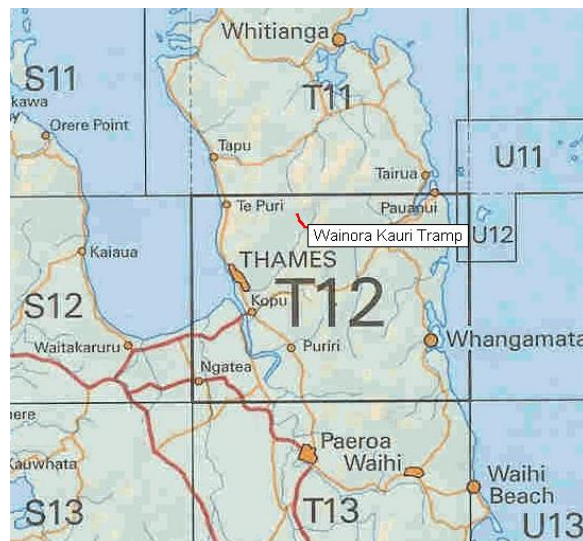
### Kauri hugging



**NZ Grid GPS:** Geodetic Datum 1949

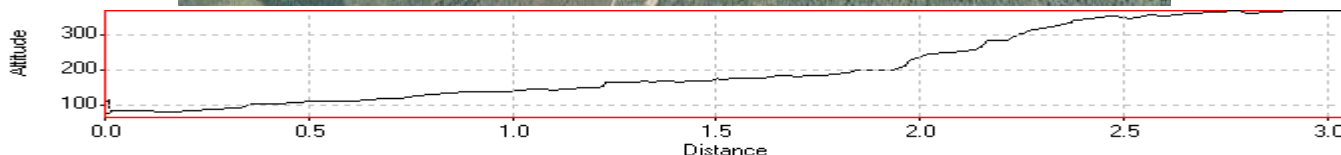
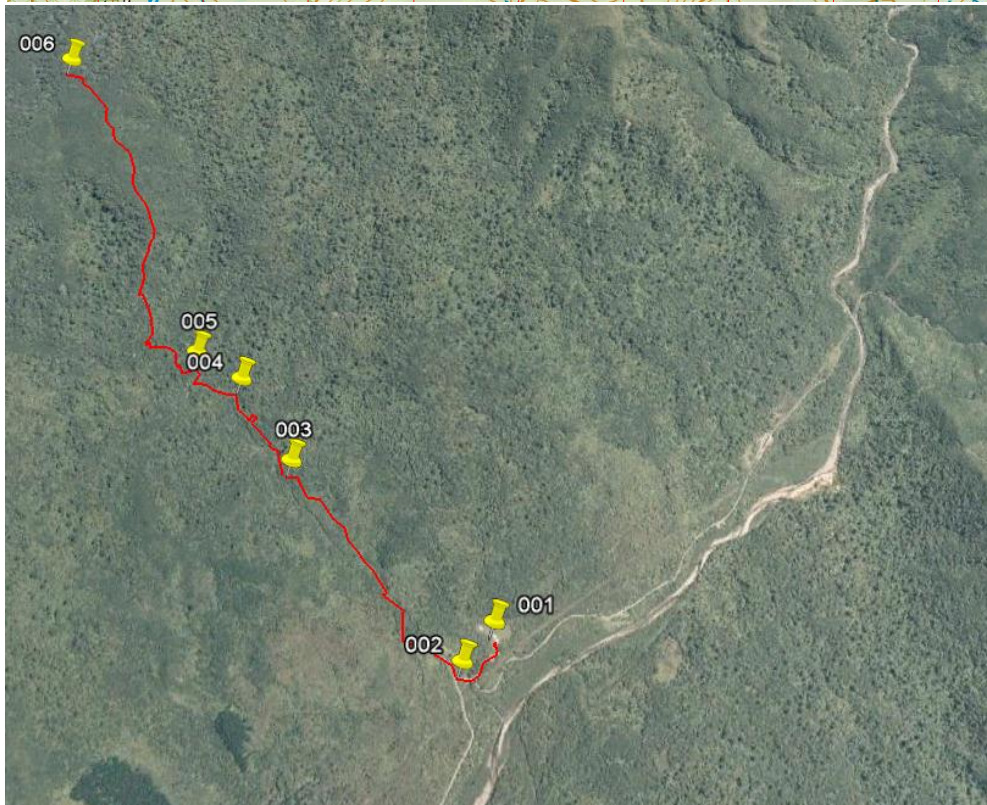
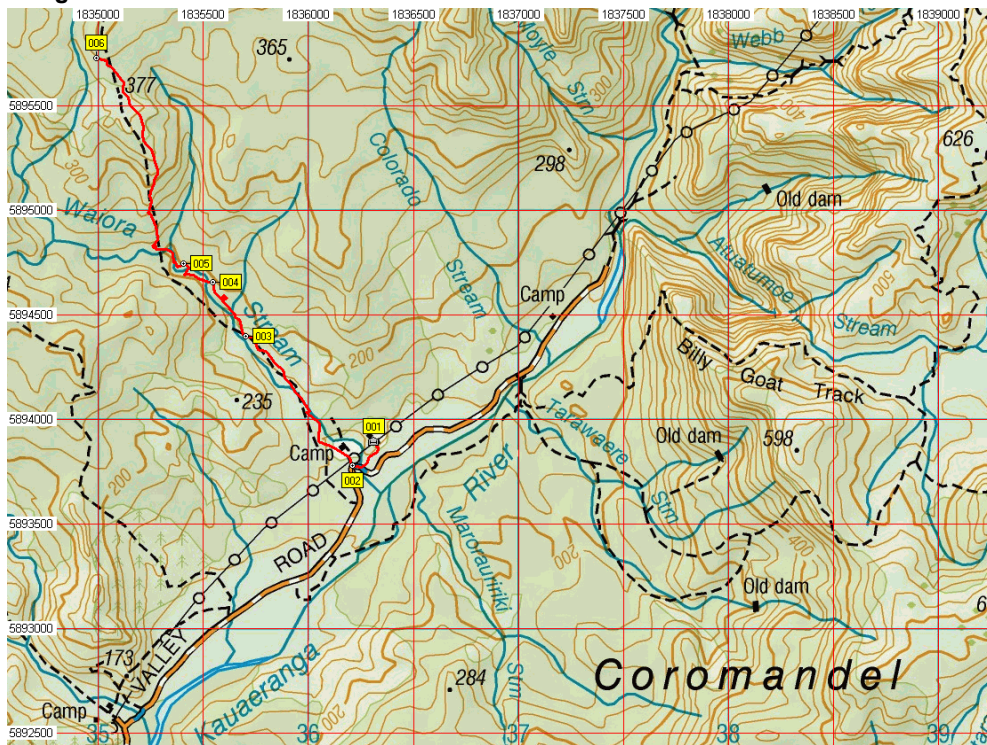
**NZTM GPS:** NZTM on WGS84

### Location





# Map and Google Image with GPS data



## Waypoints – NZ Grid

Name	Easting	Northing	Alt(m)	Description
001	2746607	6455891	134	Kauaeranga Forest Education Camp
002	2746506	6455777	84.0	Kauri Trail - Thro camp gate, right Y-fork - go right thro gate
003	2745998	6456395	144	Kauri Trail - 25 min walk, third stream crossing
004	2745844	6456655	168	Kauri Trail - 35 min walk, 5th stream crossing
005	2745705	6456744	183	Kauri Trail - 40 min walk, 7th stream crossing
006	2745289	6457727	370	1:25 walk - Wainora Kauri tree

## NZTM

Easting	Northing
1836299	5893624
1836199	5893510
1835690	5894127
1835535	5894387
1835396	5894475
1834977	5895458

## Notes:

- **Garmin Summit GPS**
- **WP = Waypoint as taken by GPS unit**
- **masl = metres above sea level**