

## HURUNUI HUT and HENDERSON TRAMLIN

**260 Series Map:** Morrinsville, T14

**Topo50 Map:** BD36 Lower Kaimai

**NZ Grid GPS:** Geodetic Datum 1949

**NZTM GPS:** NZTM on WGS84

**How to get to START:** As this is well outside the Taupo area the first step is to head North on SH1:

- Stay on SH1 at Wairakei by going left 12 minutes
- Pass Kinleith Mill in 45 minutes then through Tokoroa Town
- Pass through Putaruru on SH1 in about 1 hour
- Go right on to Whites Road SH28 in 1:05 minutes
- Right at T-junction to SH5 for Rotorua in 1:10 minutes
- Left on to SH48 two minutes later
- Right on SH28 for Tauranga in 1:20 minutes
- Minutes later right on SH29 for 3 – 4km with the latter part steep
- Pass the “lookout” and park in the next small car park on the left (01).

**Rough description:** A moderate A to B walk of just over 16km requiring 5 to 6 hours but with a longish drive of 1:30 minutes to the start. The drive can be seen as the blue line on the adjacent map whilst the tramp is the red line and the target, Hurunui Hut, lies at the top of the red spur. The tramp starts at a fair altitude but there is still a fair grunt though that is over within the first hour. The rest of the walk is, at worst, undulating and generally on good track though there are muddy, rooty sections, a few stream crossings and some of the dreaded red slippery clays on the way down. The 400 odd metres of ascent is rather concentrated as much of the ascent happens within the first kilometre or so. As this is an A to B walk a van mover is required and since there are a few exits from this tramp ensure all parties are clear as to where the van should meet you.

**Detail:** As noted it takes one and a half hours to drive from Taupo via SH1, SH28, SH5 and SH29, the car park (01<sup>491masl</sup>) for the start of the walk being near the top of the hill once you are on SH29. There is a small exit path from the back of the car park which is usually a bit messy. The track goes downhill to cross a small stream as the sign for the NS Track is followed. Three or four minutes up this track there is a small branch (02<sup>516masl</sup>) sign-posted off to the left to the Loop Track, which is ignored. In 15 minutes go right at an unmarked junction (03<sup>532masl</sup>) then there is a bit of a grunt for about 25 minutes. There is a small respite in the form of a branch off left (04<sup>593masl</sup>) to a lookout point which can offer views over the farmland to the west. The grunty ascent involves about 150 metres in about one kilometre but lasts for less than one hour. A more or less level area at the top offers a spot for a rest (05<sup>586masl</sup>) in this lush, wet broadleaf regrowth forest.

In a bit over an hour go right at a T-junction (06<sup>576masl</sup>) then a minor stream crossing (07<sup>557masl</sup>) is made in 1:20. In 1:35 to 1:45min there is a larger well marked T-junction (08<sup>568masl</sup>) with the right branch being the upper exit to the Old Kaimai Road. There are not really many notable features walking through much of this undulating terrain in the forest which often has abundant ferns and the odd wet, muddy bit. About a kilometre past this junction there are more ponds and a large, picturesque one (09<sup>567masl</sup>) offers some good photos of the trees reflected in the water. Then, after a muddy, messy bit, emerge into the open onto a raised causeway which is the Henderson Tramway (10<sup>571masl</sup>) with the second exit for the Old Kaimai Road.

**First exit to Old Kaimai Road**

**Pond with reflections**

**Henderson tramway & second exit**



On hitting the Tramway go left walking along the wide, open grassy track and in 10 minutes or so cross a small stream (11<sup>556masl</sup>) which can be slightly tricky and slippery but is not a major obstacle. There is one wider clearing and this looks as though it might have been a junction where a couple of tramways met – but this cannot be confirmed. In about 3:00 hours total, after a bit of a soulless wander through regenerating bush and grassy are branch left at a track sign (12<sup>525masl</sup>) for the 3 - 4 minute walk to the Hurunui Hut (13<sup>532masl</sup>) – the DoC sign says 2min but this only applies to the downhill return.

At one time there was no sign pointing to this hut nor was it on the map but following an upgrade by the Deerstalkers, these shortcomings have been rectified. The clearing is nice and open with several grassy sites suitable for tents; it is assumed that there were more / larger buildings on this site at one time. The hut is quite small and has recently been re-clad with timber, given a new roof plus the chimney upgraded and is obviously regularly used by hunters. From the hut the return route firstly back-tracks to the previously mentioned junction (10<sup>571masl</sup>) where a left turn is made

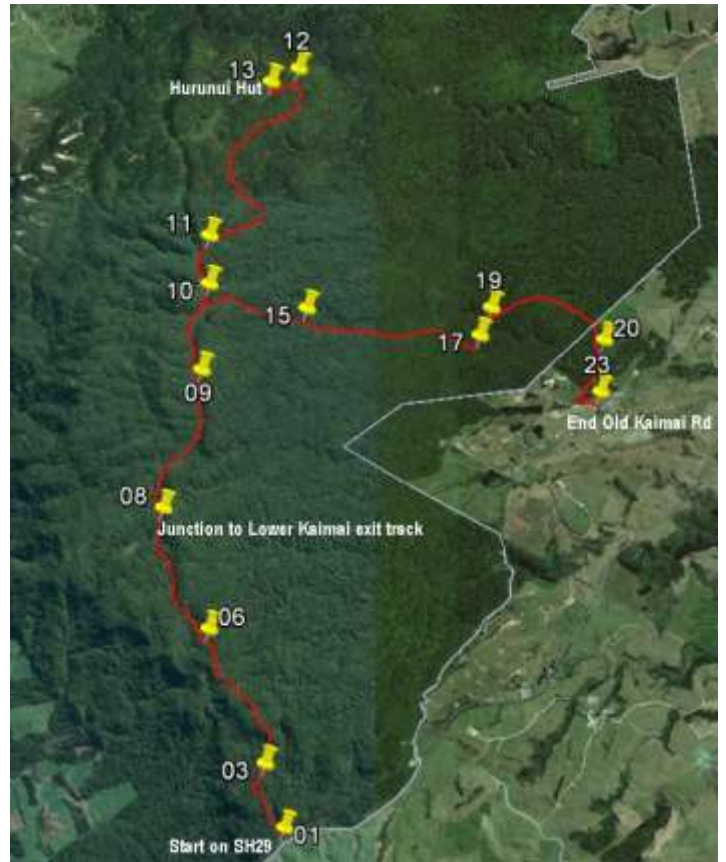
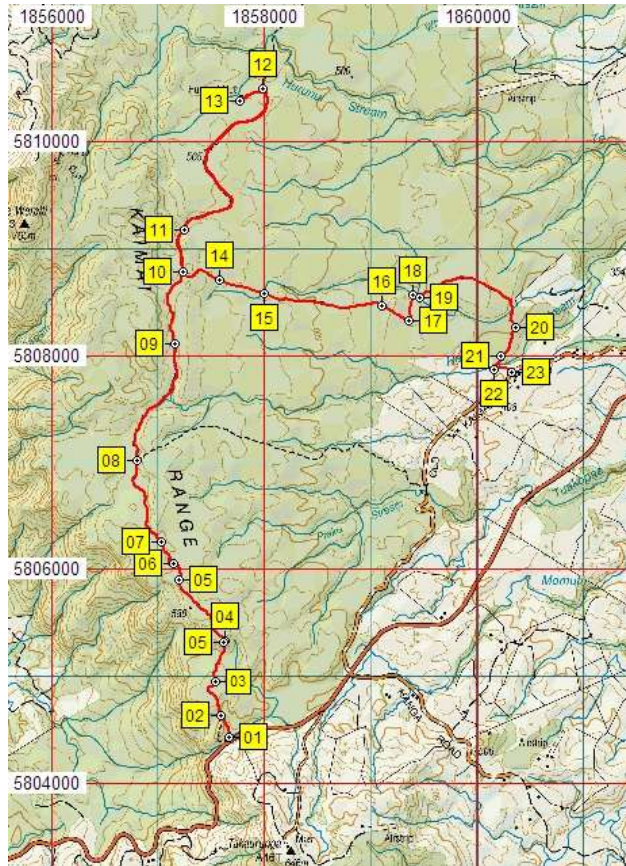
### Access



**Drive from Taupo takes about 1:30 to 2 hours**

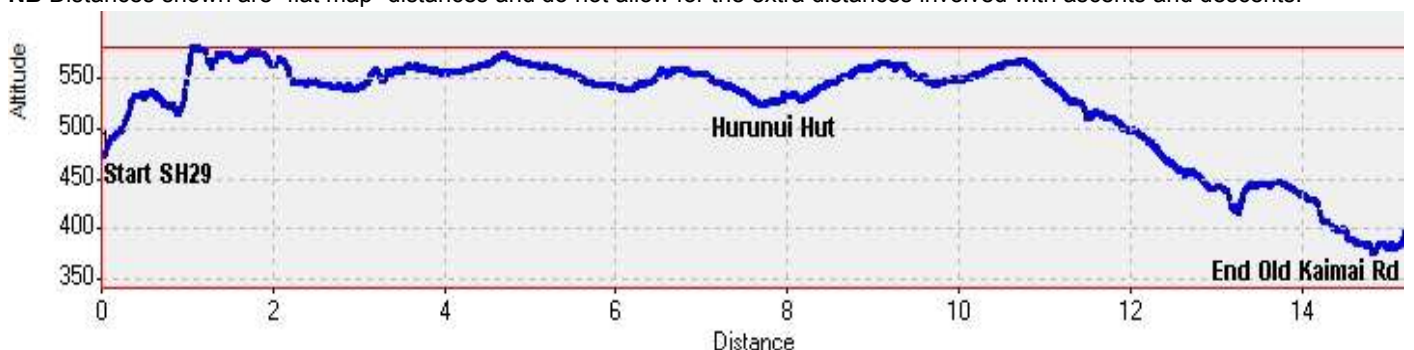


## Map and Google Earth Image with GPS data



Name	Easting	Northing	Alt(m)	Description
01	1857666	5804425	491	Park on NW side of SH29 just up-slope from viewpoint Exit from back of car park to cross stream line
02	1857591	5804630	516	5min ((0.2km); branch path on LHS going to Loop Track, go straight and uphill
03	1857537	5804954	532	15min (0.63km); unmarked Y-fork, go right
04	1857626	5805325	593	35min (1.1km); go left for look-out after uphill grunt on root infested forst track
05	1857195	5805904	586	1:12min (1.8km); undulating track in lush, rather wet broadleaf forest
05	1857610	5805319	591	3min diversion; Look-out with views over farmland from the forest
06	1857139	5806050	576	1:16min (2.02km); minor T-junction in path, go right
07	1857035	5806257	557	1:22min (2.27km); minor stream line crossing then several small pools
08	1856805	5807024	568	1:38min (3.18km); straight ahead at T-junction with right exit to Old Kaimai Road
09	1857153	5808110	567	2:05min (4.45km); large pond / small lagoon on LHS with good reflections of vegetation
10	1857235	5808793	571	2:25min (5.23km); emerge into open and go left on raised causeway (4:05min 10.7km on way back)
11	1857243	5809179	556	2:30min (5.65km); slightly tricky, slippery stream line crossing (Fun section for the Hobbits)
12	1857988	5810496	525	2:57min (7.7km); branch left at track notice for Hurunui Hut 2min but takes 4min
13	1857768	5810392	532	3:01min (7.94km); Hurunui Hut in grassy clearing (From here back-track to WPT10 and go left)
14	1857578	5808704	553	4:10min (11.06km); open area - probably a log collection and loading area as signs of levelling etc
15	1857992	5808581	518	4:16min (11.46km); incised stream crossing, slippery in parts
16	1859099	5808468	456	4:35min (12.65km); incised, dry stream-line crossing
17	1859361	5808330	449	4:41mins (12.95km); Be wary, sharp turn from SE to +/- N keep eye on orange triangles
18	1859393	5808573	426	4:48min (13.2km); river crossing with steep, tricky, slippery approach slope coming downhill
19	1859457	5808552	422	4:51min (13.27km); rocky confluence area to cross then steeply uphill on root infested slope
20	1860361	5808269	405	5:14min (14.52km); five minutes after river crossing and sighting meadow off left follow fence
21	1860214	5807995	385	5:21min (14.85km); rocky river crossing at foot of steep descent then up and over minor hillock
22	1860156	5807876	390	5:25min (15.02km); crossing on slippery rocky shelf above waterfall then into meadows and over stile
23	1860317	5807849	403	5:31min (15.25km); stile at top of steep slope to access farm exit road on Old Kaimai Road

**NB** Distances shown are "flat map" distances and do not allow for the extra distances involved with ascents and descents.





### Hurunui Hut – previous status



From the hut the return route back-tracks to the previously mentioned junction (10571masl) where a left turn is made to head gently downhill on the wide track where the ripples that can be seen in places must be where the original sleepers were located on the ground.

A short distance down here (14553masl) reached in about 4hours tramp time there is a clearing which appears as though it might have been a loading area for the logs on to the trams.

### Revamped Hurunui Hut



The descent is generally all rather gentle with the only slopes associated with a few stream lines which have to be crossed, the stream lines are often a bit incised and there can be slippery bits as the dreaded reddish clays exist with some well-placed roots for tripping over – these are lethal when wet:

- 15518masl – (4:15 – 4:30min) incised, slippery stream crossing
- 16456masl – (4:35 – 4:45min) incised, usually dry stream line
- 18426masl – (4:45 – 5:00min) river crossing with steep, slippery approach
- 19422masl – (5:00 – 5:15min) rocky confluence from the left then steeply uphill on tricky, root infested slope.

From the river crossing (15) the track heads ESE for about 1.5km but there is a very sharp turn left (17449masl) to the North which is well marked with orange track markers but can be missed. The track originally passed through the gully heading north but now is on the right hand side of said gully.

Five minutes or so after crossing the river a meadow can be glimpsed off left through the trees and five minutes later a fence line (20405masl) is met on coming into the open. The track then parallels the fence line down-slope and back under tree cover to arrive at a rocky river crossing (21385masl) which can be tricky if there has been recent rain though the footing is usually not too slippery. Then it is up and over a small hillock.

Five minutes later there is yet another river crossing (22390masl) and this one has a fence up-stream, a flat rocky shelf like area to walk over and a small waterfall on the down-stream side. This crossing can appear daunting especially if the river level is up a bit as the rocks can be slippery though generally the rocky bottom proved to have good grip.

From this crossing a meadow is then entered, there are a couple of stiles to cross and a grassy slope to ascend to emerge on the Old Kaimai Road where, if communications have been good and instructions understood your transport should await (23403masl), the whole tramp taking between 5:30 – 6:15 minutes including refreshment and lunch stops.

### River confluence



### Final Crossing with boot cleaning opportunity



### Notes:

- **GPS** = Garmin GPSMap 62sc
- **WP** = Waypoint as taken by GPS unit
- **masl** = metres above sea level
- **Modern GPS** units nearly always record distances greater than the “apparent” mapped distance, in this case just over one kilometre more. This indicates that the GPS really is recording the distance covered due to ascents and descents whilst map distances are “flat map” calculations

From : 09-Dec-15 09:13:22  
To : 09-Dec-15 14:44:56

Time taken : 5:31:33  
Total Distance : 15.248 Km  
**GPS Distance : 16.37km**  
Minimum Speed : 0.003 KPH  
Maximum Speed : 7.109 KPH  
Average Speed : 2.759 KPH

Minimum Altitude : 376 Meters  
Maximum Altitude : 580 Meters  
**Total ascent : 429metres**