

SPLITTERSVILLE

260 Series Map: Kaimanawa, U19

Topo50 Map: BH37 Rangitaiki

How to get to START:

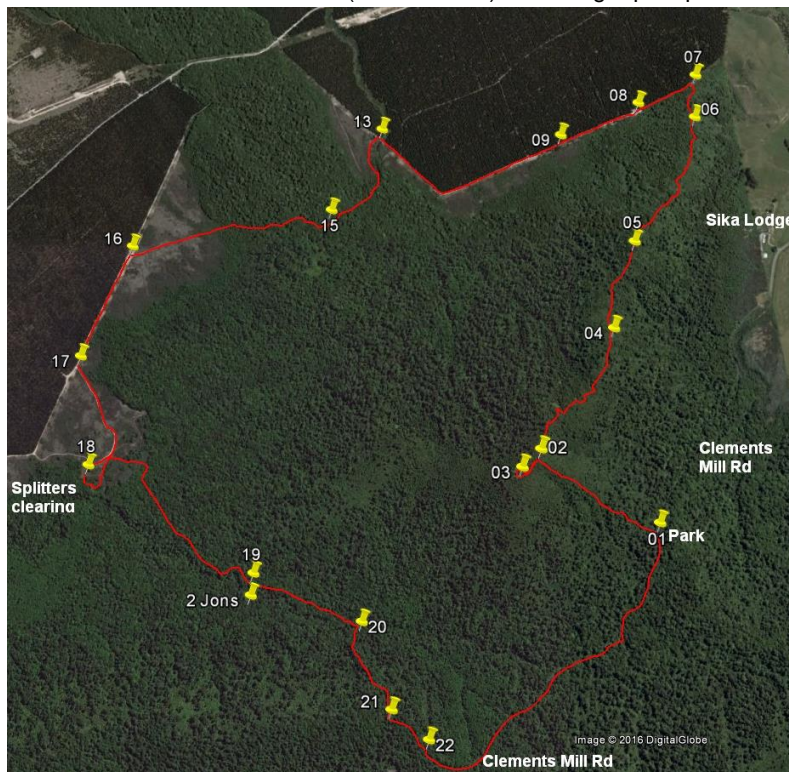
- Exit Taupo on **SH5** for Napier.
- In about 20 minutes turn right into **Taharua Road**
- In another 7 – 8 minutes turn right to **Clements Mill Road** which becomes gravel
- Look for small parking bay (**WP01**) about 1.5km down the gravel section

Travel times for access are measured from Taupo Police Station

Rough description: This walk in the woods takes around 5 or 6 hours depending on how often “displacement” occurs, covers about 12km which translates to 10 mapped km on the actual topo map and ascends a total of 397metres. The route is almost all on hunters’ tracks, old historic roads and present day forestry roads. Features include “Cherry Ridge” - which was ravaged by cyclone Bernie in 1982 and which is the backdrop to Sika Lodge, “Woody’s Tongue” - on the norther edge of the tramp and named after Woody Collins who developed the scrubland into Wainui Station, “Splittersville” - the isolated site of a former batten splitters camp with a few rusty relics still to be seen, “Old Saddle Road” – the now overgrown former road into the northern Kaimanawa until Clements Mill Road was built in 1960 by Burrows Ltd of Taupo.

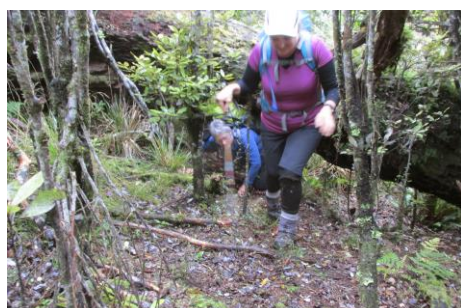
Detail: Once parked (**WP01**^{852masl}), walk straight over the gravel road and up the bank on to a barely discernible track with 30minutes of grunt ahead to reach the summit of Cherry Ridge (**WP02**^{995masl}) – windfalls have to be climbed over or crawled under!

A short diversion can be taken from here to view a small clearing (**WP03**^{987masl}) but be careful as lot of time consuming “displacement” can occur here as directional confusion is easy. Once the compass is sorted out the route heads down the ridge to the north east to be above Sika Lodge where on clear days views (**WP04**^{913masl}) can be had then 10min later a stand of beech (**WP05**^{912masl}) is passed through. To date the track has not been well marked but on reaching a well-marked junction (**WP06**^{837masl}) where a track from Sika Lodge joins from the right, the huge pink splodges are highly visible. The route now swings to the north and within minutes the cleared area (**WP07**^{849masl}) bordering a pine plantation is reached.



The route is now very obvious as it heads WSW down the forest edge firstly on a track then forest road with about the only notable feature being a skull with green (**WP09**^{784masl}) horns – obviously named “The Greenhorn”.

From **WP11**^{776masl} there is a clear change in direction to NW for 500metres until a pond (**WP13**^{773masl}) is found on the left just before a junction. By turning left here the old 1930s Saddle Road (**WP14**^{773masl}) is followed to the SW firstly through grassland and scrub then forest with the odd deviation (**WP15**^{783masl}) to get round some windfalls to again meet a forest road (**WP16**^{752masl}). Five hundred metres to the SSW shows a road on the left blocked off with a bund (**WP17**^{755masl}) and following this through the grassland scrub to the SE leads to the clearing where the wood “splitters” had a well-established (**WP18**^{751masl}) camp – there are several bits and pieces of old machinery still to be found, the clearing makes a pleasant place for lunch. After lunch and looping round the clearing the track continues to the SE and the level walking vanishes and a 20minute ascent assaults the legs – but the track is good and once up (**WP19**^{757masl}) the depth of the Manukatuatua Stream line can be well seen – this is adjacent to the Two Jons camp.



Windfalls



Attractive Flora

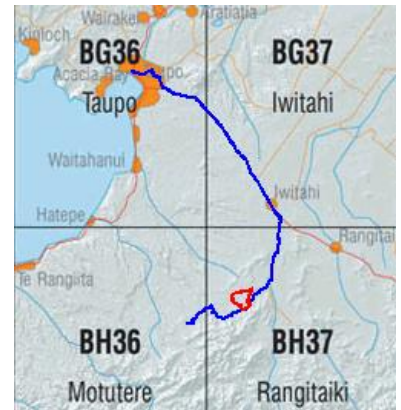


Old Motor Engine

NZ Grid GPS: Geodetic Datum 1949

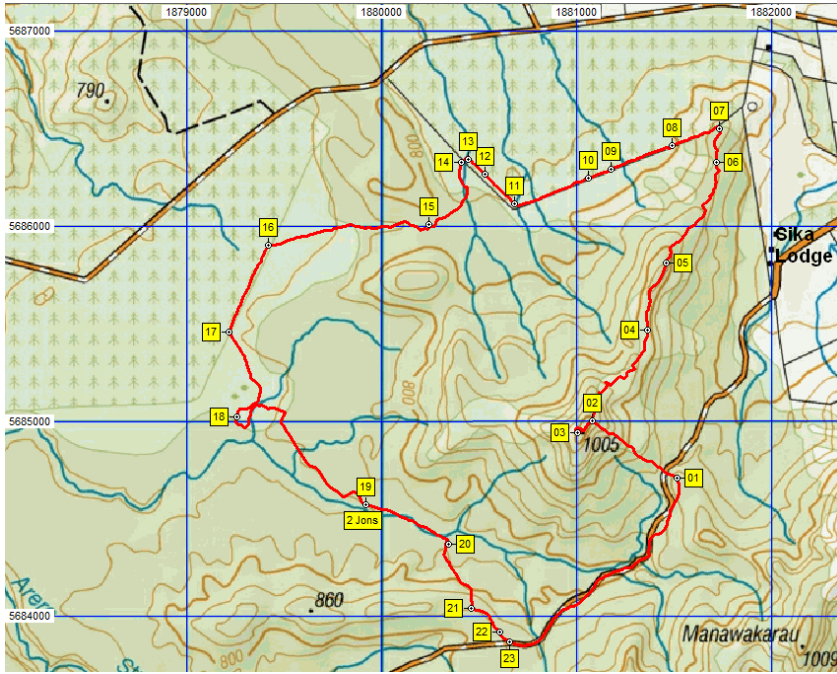
NZTM GPS: NZTM on WGS84

Access

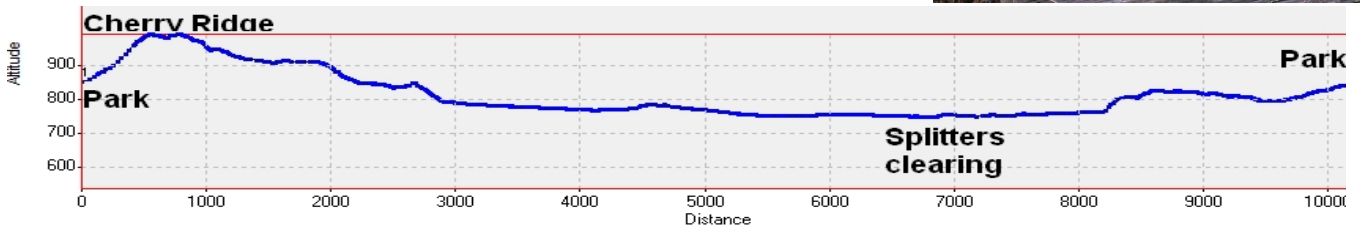


BLUE = roads

RED = tramp line



The track or road continues to be good until it has to be abandoned by heading right (**WP20**^{762masl}) due to more windfall blockage. The track is now a little rougher until a junction is reached (**WP21**^{828masl}) where the track to the left improves as it heads towards Clements Mill Road; to the right can be used to reach the Two Jons camp. An open area / car park (**WP22**^{826masl}) with some dilapidated picnic furniture is passed through to then meet and go left (**WP23**^{824masl}) on Clements Mill Road for a bit over a kilometre back to the starting point.



N...	Easting	Northing	Alt(m)	Description
01	1881520	5684713	852	Park in bay at side of Clements Mill Road
02	1881079	5685006	995	0.55km (37min); Summit of Cherry Ridge after steep ascent on a hunters' track
03	1881005	5684940	987	0.65km (42min); Small clearing on spur just to SSW of summit
04	1881368	5685471	913	1.47km (2:28min); Above Sika Lodge at spot with views on a clear day
05	1881460	5685810	912	1.84km (2:40min); Stand of beech trees
06	1881721	5686329	837	2.49km (3:02min); Junction with track from Sika Lodge from the right, go left on large pink markers
07	1881731	5686502	849	2.68km (3:14min); Open firebreak area on edge of pine forest, go left to WSW on obvious track
08	1881495	5686409	794	2.95km (3:22min); Meet and follow forest road, frozen and messy in places
09	1881174	5686289	784	3.28km (3:28min); Go straight at forest road junction marked by skull with green horns
10	1881060	5686247	782	3.41km (3:31min); Junction off right - ignore
11	1880683	5686115	776	3.82km (3:37min); Junction off right - ignore
12	1880532	5686264	771	4.03km (3:39min); Junction off right - ignore
13	1880443	5686344	769	4.15km (3:44min); Pond on LHS, turn off to smaller road just past the pond
14	1880412	5686328	773	4.19km (3:45min); Overgrown old road from the 1930s
15	1880239	5686009	783	4.65km (3:55min); Minor deviation off left as road ahead blocked with windfalls
16	1879418	5685900	752	5.54km (4:17min); Meet and follow left (SW) larger forest road
17	1879218	5685457	755	6.03km (4:24min); Left on to smaller road with large bund blocking entrance
18	1879256	5685020	751	6.58km (4:32min); Deviation off road into splitters clearing (lunch spot)
19	1879916	5684573	757	7.69km (5:24min); Good track parallel to Manukatua Stream with 2 Jons camp to the SW over stream
20	1880344	5684373	762	8.19km (5:36min); Right off the road due to windfall blockage ahead
21	1880464	5684041	828	8.58km (5:51min); Left at T-junction to better track. Right for 2 Jons
22	1880607	5683924	826	8.77km (5:55min); Open car park area with old picnic table
23	1880657	5683870	824	8.86km (5:57min); Meet Clements Mill Road and go left for 1.3km
2 Jons	1879907	5684489	769	2 Jons camp on opposite side of stream at WP19



- Notes:**
- **GPS** Garmin GPSMap 60CSx
 - **WP** = Waypoint as taken by GPS unit
 - **masl** = metres above sea level