

WAIRERE FALLS via TE TUHI

260 Series Map: Morrinsville, T14

Topo50 Map: BD36 Lower Kaimai

How to get to START: As this is well outside the Taupo area the first step is to head North on SH1 towards Rotorua then:

- Stay on SH1 at Wairakei by going left 12 minutes
- Pass Kinleith Mill in 45 minutes then through Tokoroa Town
- Pass through Putaruru on SH1 in about 1 hour
- Go right on to SH28 in 1:05 minutes
- Pass T-junction to SH5 for Rotorua in 1:10 minutes
- In Tirau turn right on to SH27 then pass over SH29 1:20min
- In Matamata turn right into Burwood Road just before the rail-crossing chicane 1:25 min
- Straight ahead on Tower Road at small round-about passing the Tower on the way
- Turn off right in 1:30 mins at sign for Wairere Falls
- Turn left in another 3 minutes with Wairere Falls 7km sign
- Right into Te Tuhi Road in a further 3 minutes and go to end of asphalt in 1:45 – 2 hours
- Drop trampers at start of gravel road (**TW01** 132masl)

Rough Description: As indicated above it takes almost 2 hours to drive from Taupo to the car park (**TW01** 132masl) at the end of Te Tuhi Road; all times are taken from Taupo Police Station on the Domain. The walk is best described as a hard grunt uphill followed by a moderate undulating walk through superb broad-leafed, mainly beech, forest followed by a knee trembling descent back down to the car park at the end of Goodwin Road (**TW34** 51masl). On the way there are fantastic views from above Wairere Falls (**TW24** 407masl) plus great views of the falls (**TW27** 272masl). The descent can be made “exciting” if the old Maori Trail down is followed – not recommended for the wary or unfit.

Detail: From the drop-off point (**TW01** 132masl) walk SW on the gravel road up through farmland coming to a gate within 10 minutes with a stile over the fence. Minutes later follow the fence line rather than the road as this cuts the corner bringing you back to the road and another stile in about 18 min total. The route is marked with orange triangles so easy to follow. It is quite a grunt up through all the farmland then there is a steep little descent to cross a stream line (**TW06** 301masl) where you enter the forest. One of the “gruntest” 30 minute ascents then starts through superb broadleaf forest passing one small track joining from the left about halfway up.

For the next four hours there are not really many features to note apart from the superb forest and several stream line crossings but there is a track junction at about 2:15 min walking when you take the left branch and head North. There is one small valley filled with windfalls (**TW18** 439masl) at just over 4 hours walking so care must be taken to get into this valley through the windfalls and re-locate the track.

Marked junction



There is then a marker post at a junction (**TW20** 432masl) at 4:30 min where you go left. Twenty minutes later yet another marker post (**TW21** 421masl) indicates where the North Track crosses your line as you head SW.

From here on the track gets a bit muddy and indistinct but soon there is the odd bridge / bit of boardwalk and a T-junction is arrived at (**TW26** 268masl) – going right here for a couple of minutes takes you to a platform above the Wairere Falls.

The real descent now commences and it can be tiring but it is quite safe with many well made steps, yet another falls viewing-platform (**TW27** 272masl) then a massive staircase to descend.

The latter part of the track has a few bridges and boardwalk through bouldery areas below some bluffs and the end is reached in something around 6 hours having covered over 14km plus ascended / descended about 500 metres.

On the descent it is possible to take a short cut by using the Old Maori Trail from **TW25** down to **TW33**. However this route is not recommended unless you are very sure footed, plus have strong hands and arms, since the path is not maintained and use of trees and vegetation is often the only safe way of descending some of the slippery slopes.

NZ Grid GPS: Geodetic Datum 1949

NZTM GPS: NZTM on WGS84

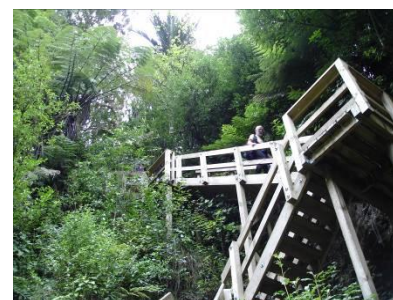
Access



Farmland stile

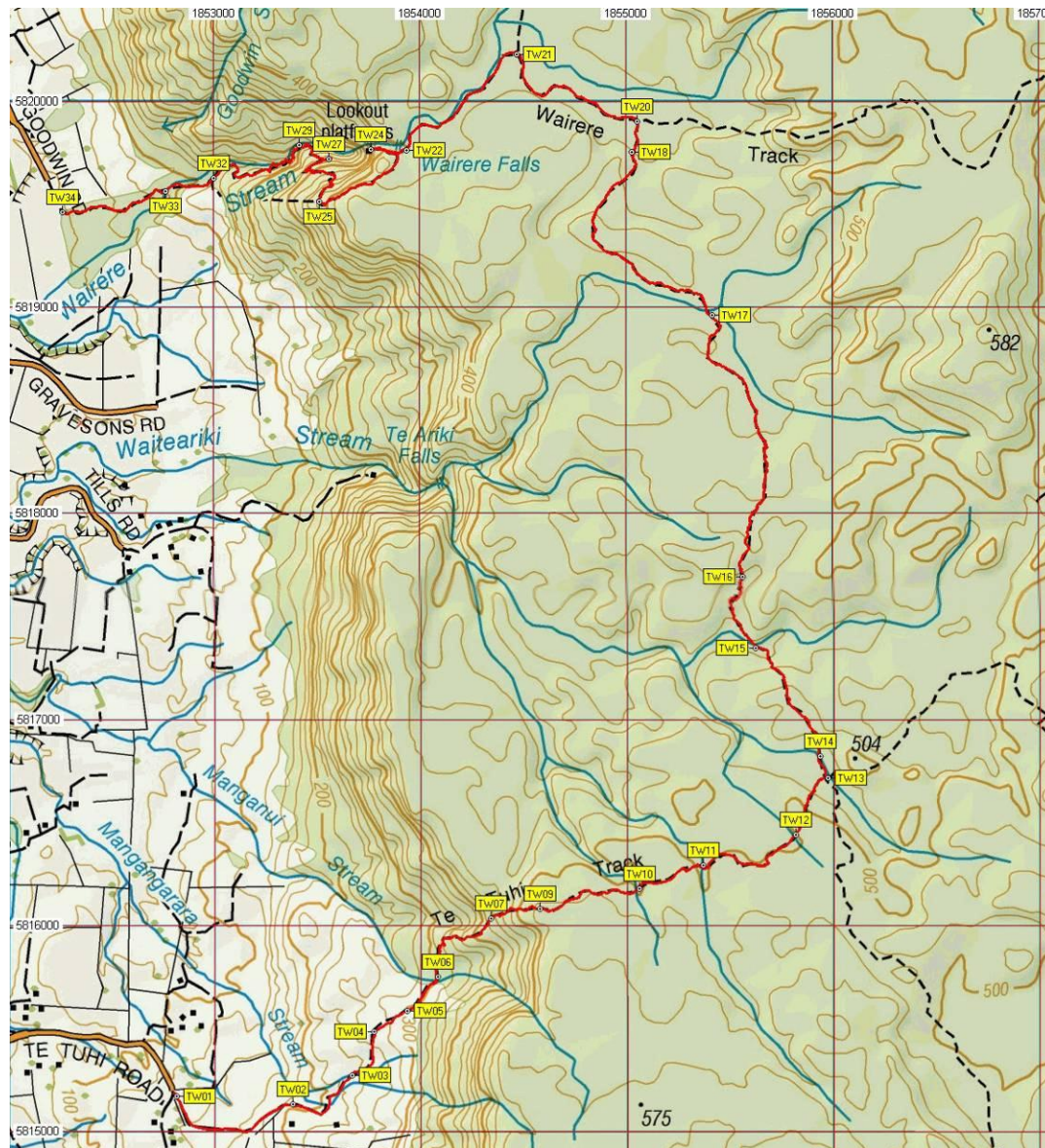


The staircase



More detail on and photographs of this section of the tramp can be found in the tramp note titled “Wairere Falls” where the tramp was the ascent to and descent from the top of Wairere Falls from the Goodwin Road car park.

Map with track and waypoints



GPS data

From : 22-Aug-07 09:08:58
To : 22-Aug-07 15:31:24

Time taken : 6:22:25
Total Distance : 14.150 Km

Minimum Speed : 0.000 KPH
Maximum Speed : 12.365 KPH
Average Speed : 2.220 KPH

Minimum Altitude : 49 Meters
Maximum Altitude : 537 Meters

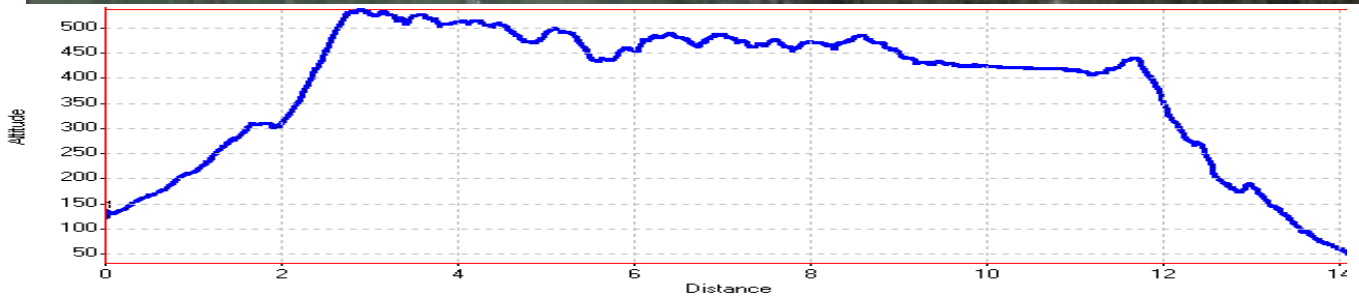
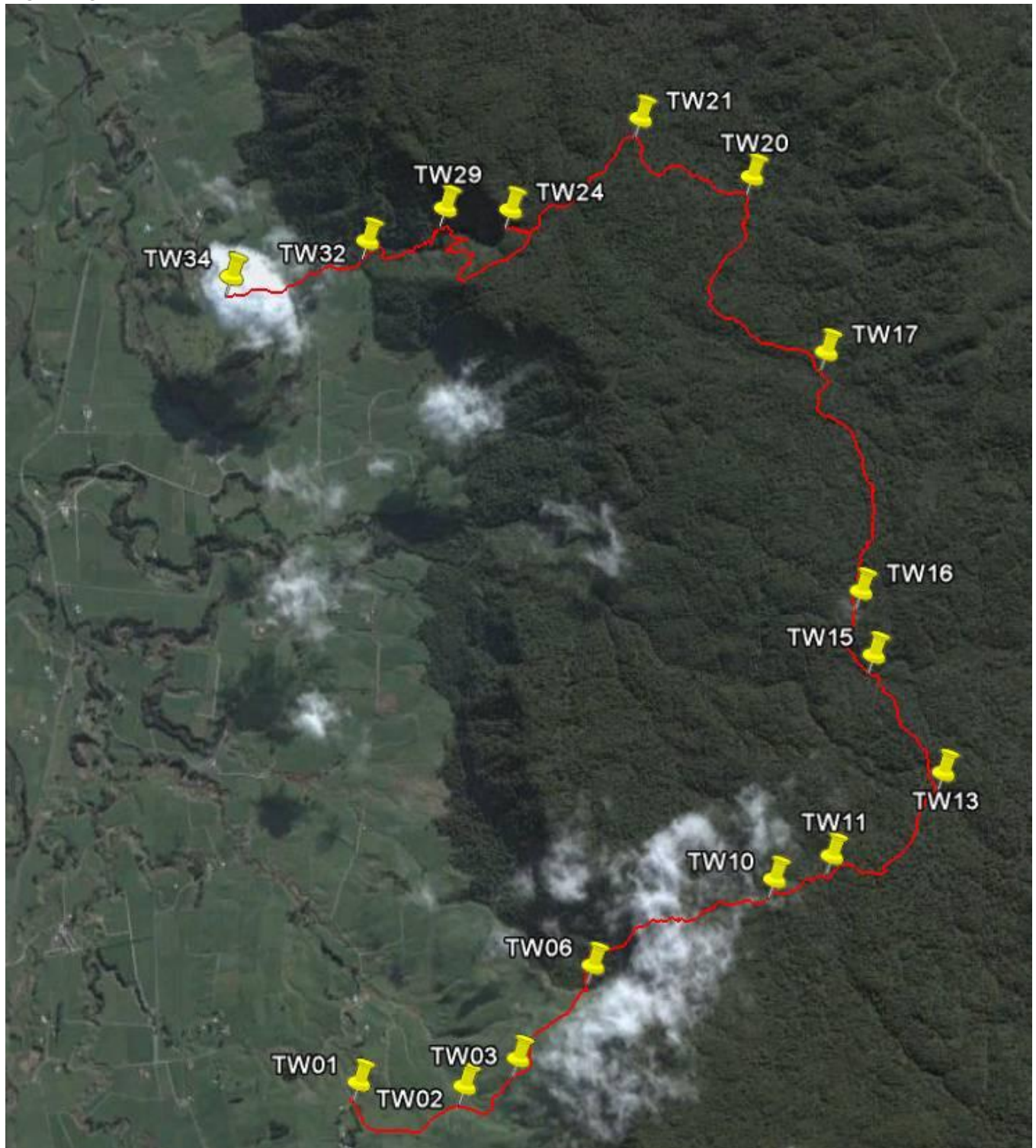
Waypoints – NZ Grid

Name	Easting	Northing	Alt(m)	Description
TW01	2762962	6377170	132	22-AUG-07 Car park at end of Te Tuhi Road
TW02	2763523	6377132	191	Ten min walk; over stile on gated gravel road just past T-junction then follow fence line not road
TW03	2763812	6377269	236	18min walk: Cross gravel road to stile and uphill
TW04	2763920	6377481	280	25 min walk: cross another stile
TW05	2764081	6377584	311	30 min "grunt" walk; through gate on to track going left towards forest
TW06	2764226	6377749	301	35 min walk; steep down to stream then enter forest going steeply upslope
TW07	2764485	6378033	456	55 min "grunty" walking; small track entering from LHS
TW08	2764612	6378075	513	1:02 walk; slight easing in the slope but still a bit of a grunt
TW09	2764724	6378076	532	1:10 min walk; almost level with large mossy log for tea stop
TW10	2765206	6378173	507	1:40 min walk; easy stream line crossing
TW11	2765515	6378288	503	1:50min walk: stream line crossing then left and upwards
TW12	2765964	6378434	500	2:05 min walk; stream line crossing
TW13	2766121	6378709	474	2:15 min walk; track junction - go left to the North
TW14	2766082	6378818	470	2:20 min walk; stream line crossing
TW15	2765772	6379343	433	2:40 min walk; wider stream crossing, not deep
TW16	2765715	6379684	454	2:50 min walk; stream line crossing then steeply upwards to lunch spot at 3 hours walking
TW17	2765572	6380954	455	3:50 min walk; river crossing, not too deep and easy
TW18	2765183	6381747	439	4:20 min walk; small valley with track obscured by windfalls, go right downslope in valley
TW19	2765210	6381810	431	4:23 min walk; small stream confluence then cross stream and upslope
TW20	2765208	6381894	432	4:30 min walk; marker post with track junction - go left
TW21	2764625	6382222	421	4:50 min walk; marker post at N-track junction; head SW
TW22	2764090	6381756	417	5:05 min walk; small boardwalk bridge then bearing right
TW23	2764036	6381741	415	5:11 min walk; T-junction with right to Wairere Falls viewpoint
TW24	2763919	6381761	407	5:26 min walk; Wairere Falls upper view platform
TW25	2763666	6381508	402	5:35 min walk; T-junction on left to Old (Maori) Trail - not advised
TW26	2763690	6381707	268	5:40 min walk; small T-junction to the right for lower Wairere Falls view platform
TW27	2763715	6381713	272	5:42 min walk; Lower view platform
TW28	2763629	6381771	231	5:47 min walk; top of massive wooden staircase
TW29	2763572	6381781	199	5:49 min walk; bottom of massive wooden staircase
TW30	2763539	6381725	190	5:51 min walk; first of two bridges
TW31	2763468	6381685	175	5:53 min walk; boardwalk below some wet, dripping bluffs
TW32	2763153	6381621	140	6 hours walk; bridge
TW33	2762923	6381561	96.0	6:06 min walk; T-junction on left with lower / exit of old (Maori) trail then edge of meadow
TW34	2762423	6381457	50.9	6:15 min walk; small bridge just before reaching car park on Goodwin Road

NZTM

Easting	Northing
1852802	5814901
1853364	5814864
1853653	5815001
1853761	5815214
1853922	5815316
1854066	5815482
1854324	5815766
1855355	5816023
1855804	5816170
1855960	5816445
1855921	5816554
1855610	5817079
1855553	5817420
1855407	5818691
1855017	5819484
1855044	5819546
1855042	5819631
1854458	5819958
1853923	5819491
1853870	5819476
1853752	5819495
1853500	5819242
1853523	5819441
1853549	5819447
1853462	5819505
1853405	5819515
1853373	5819459
1853302	5819419
1852987	5819354
1852756	5819294
1852256	5819189

Google Image with track



Notes:

- **GPS** = Garmin GPSmap 60CSx
- **WP** = Waypoint as taken by GPS unit
- **masl** = metres above sea level