

Te IRINGA PUNCHIE'S ROAD

260 Series Map: Kaimanawa, U19

Topo50 Map: BH37 Rangitaiki

How to get to START:

- Exit Taupo on **SH5** for Napier.
- In about 25 minutes turn right into **Taharua Road** at 27.5km
- After 8 minutes again turn right (36.5km) into **Clements Mill Road** which quickly becomes gravel (36 min / 38.5km) and enters the forest
- After 10 minutes on this gravel road the **Te Iringa** car park is on the left.

NB All times and distances are from the police station on the Domain in Taupo

Rough description: A moderate plus, if unexciting, 15km loop walk without too much ascent taking around 7 hours which can be done on even a very wet, rainy day. The original tramp to Punchie Wallace's road and clearing is described elsewhere but it is shown on the map image where the original is in BLUE and the new variation is in RED.

No description of this tramp has been written as it was very much an exploratory outing. The information and data presented would be sufficient for any GPS user to undertake this walk though it should be understood that there is always the risk of getting misplaced due to poor tracks and poor or old track markings.

Total distance recoded being over 15km with almost 7 hours being required for the outing. However by combining the two tracks distance can be saved or increased if Quarry Burn Hut is visited.

From :	07-Jun-15 22:05:00
To :	07-Jun-15 22:05:00
Time taken :	0:00:00
Total Distance :	15.168 Km
Minimum Speed :	No Time
Maximum Speed :	No Time
Average Speed :	5460472.518 KPH
Minimum Altitude :	729 Meters
Maximum Altitude :	1178 Meters

Author's Notes

I attempted to drop off the Te Iringa track and hook up with Punchies. I made two important incorrect assumptions that could have proved a problem, fortunately it turned out for the best. In my defence I will say the bush was saturated, as was I after a while and it was very difficult to read the GPS. This trip is very do-able by the club for those who do not mind a bit of bush-bashing.

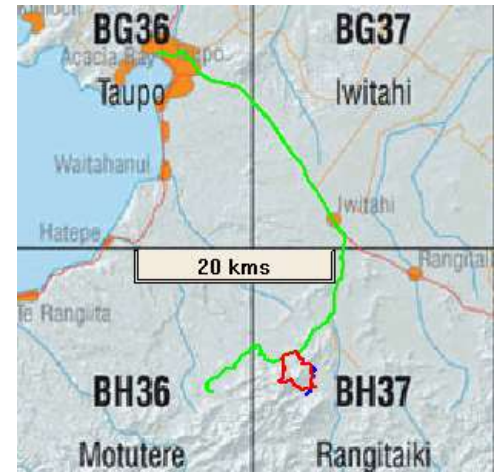
Most of the ridge, particularly the first bit from the jump off point along to the high point of 1148 is marked intermittently by old and new pink flagging. I was amazed to run into a deer proof enclosure and the difference in vegetation was obvious as were the deer hoof prints all around the perimeter!! Where one loses the track along the ridge line the scrub gets pretty thick, again a combo of horopito and bush lawyer, hence the bush bashing and free shower every 2 seconds. The drop off from 1148 went surprisingly well as it looked pretty steep and once the spur is gained the going is very good and one ultimately picks up a recently cut track, albeit without any markers and travel is good. It was towards the bottom of the spur when my loaded waypoints took me off to the north to Punchys that I decided to stay with the cut track as travel was so good and shouldered the GPS. I duly hit a very obvious track that followed a very old vehicle track and assumed, incorrectly that it was Punchys. This was lunch so took the time to load up the waypoint where I should have it Punchys and it lay 800m away to the north so all was good, especially as I walked on and the distance reduced nicely. Without knowing I went straight over Punchys, still following my old vehicle track and quite quickly noticed that my distances to the waypoint were lengthening not shortening and very soon after that ran into the pine plantation. I realised that Punchys was away to the north and here by good chance was a track heading off up the fenceline in that direction. It was marked by bright pink splodges of pink spray point. Sure enough Punchys was regained and the pink splodges ran along Punchys and I was able to nail a sequence of loaded waypoints. Unfortunately somewhere around here I managed to either delete the remaining loaded waypoints or they had been dislodged by new ones that I had been loading, but I "assumed" that I was rolling along Punchys and all was good on the pink splodges. Unbeknownst to me the pink splodges led uphill off Punchys in what turned out to be some sort of short cut but at afternoon smoko when I loaded up your Punchys I could see that I was quite a way off but heading on a good direction. I was fully aware now that if I lost the pink splodges I would be faced with a shitty bush bash down hill to try and pick up Punchys. I duly lost the pink splodges and in searching for them fell out onto Punchys, having pruned a good amount of time off but missing Quarry Burn Hut. The rest was a grind. I can not say I was particularly happy today as two assumptions proved to be incorrect and they could have been easily checked if I had taken the time to pull out my glasses and examine the GPS in detail! Lessons learned!!!

Nick Green

NZ Grid GPS: Geodetic Datum 1949

NZTM GPS: NZTM on WGS84

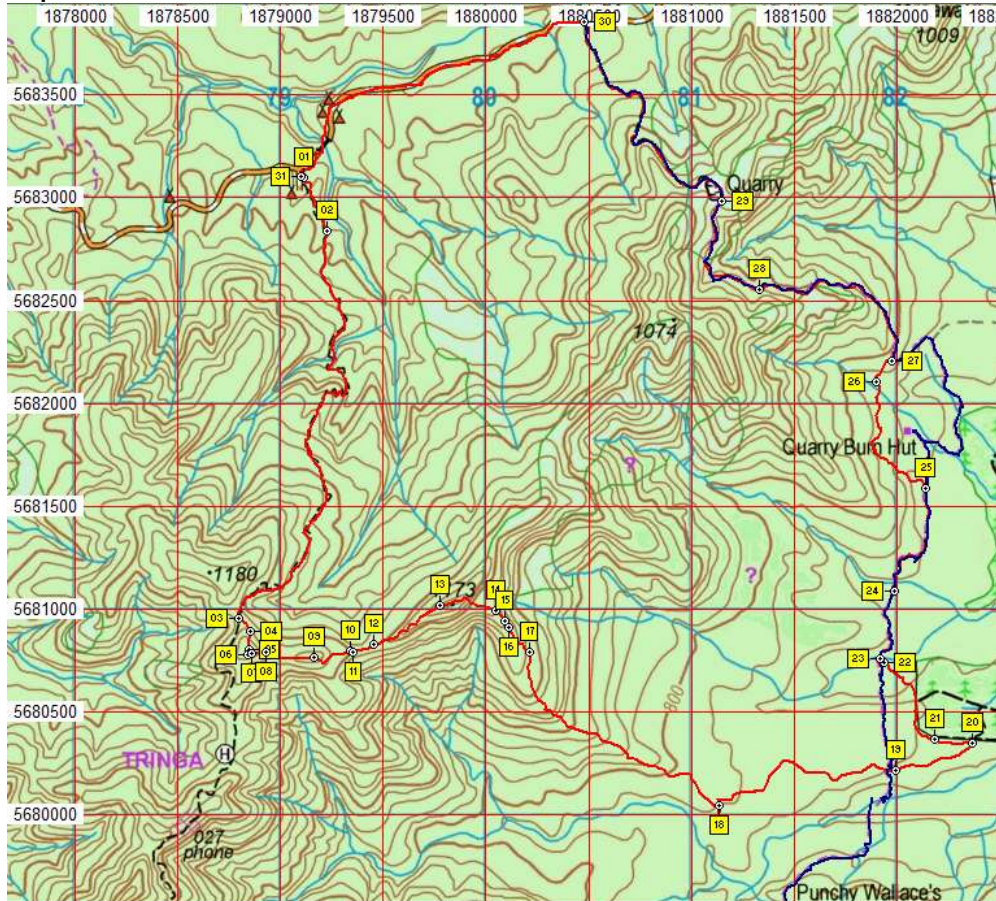
Access



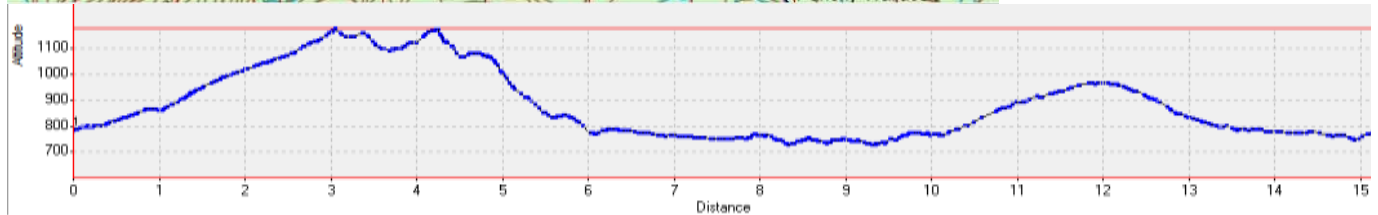
An indication of the route to the start is the GREEN line running on and turning off SH5 on to Clements Mill Road. The BLUE and RED lines are tramping routes



Map with GPS data



Red trace is the new recce route whilst the Blue is the old original route to Punchie Wallace's Road and Clearing.



Waypoints NZ Grid

Name	Eastng	Northing	Alt(m)	Description
01	1879111	5683097	788	Start at car park
02	1879229	5682840	801	320m (6min); New bike gate
03	1878795	5680958	1127	2.85km (54min); First saddle on Te Iringa Track
04	1878856	5680891	1151	2.94km (1:08min); Pink flagging on subtle track that sidles high point to NE
05	1878848	5680804	1171	3.03km (1:12min); More pink flagging on poor track
06	1878844	5680781	1180	3.05km (1:13min); First knob that is sidled by subtle track marked by pink flagging
07	1878862	5680784	1172	3.07km (1:15min); Back on subtle track often marked by pink ribbons
08	1878930	5680791	1154	3.13km (1:18min); Series or orange markers on pins into ground
09	1879165	5680767	1161	3.38km (1:28min); Second knob, track ok, still odd pink flagging
10	1879340	5680797	1101	3.59km (1:40min); NW corner of deer proof enclosure
11	1879355	5680794	1099	3.62km (1:44min); More pink flagging after enclosure but track hard to follow
12	1879453	5680827	1098	3.71km (1:49min); Subtle knob, still odd pink flag, hard going at times
13	1879777	5681018	1157	4.1km (2:09min); More pink flagging seems to mainly follow northern side of ridge, thick scrub
14	1880045	5680991	1107	4.42km (2:33min); Messy drop off, steep and thick scrub, good after
15	1880089	5680944	1080	4.47km (2:37min); Picnic bar wrapper, good going down spur
16	1880113	5680910	1065	4.54km (2:41min); Small saddle on spur, going good
17	1880210	5680791	1082	4.71km (2:46min); Distinct knob on spur, contours wrong, going good and start of cut track
18	1881137	5680047	775	6.07km (3:33min); Junction off cut track onto obvious old vehicle track, assumed wrongly as Punchies
19	1881995	5680214	759	7.26km (4:05min); Missed Punchies, another track goes to SE
20	1882366	5680349	750	7.61km (4:08min); Obvious track hits fence and pine trees, wrong, start pink spray marks
21	1882181	5680369	753	7.83km (4:15min); E-W fence, following pink spary marks up fence line
22	1881937	5680741	731	8.33km (4:16min); track intersects Punchies again and pink spray marks follow Punchys
23	1881917	5680761	733	8.4km (4:28min); Stream crossing on Punchies but track subtle on northern side
24	1881988	5681091	730	8.7km (4:38min); Creek crossing, Pink spray marks also mark Punchies
25	1882139	5681587	737	9.43km (4:48min); Pink spray trackk diverges from Punchies and climbs to NW
26	1881900	5682108	762	10.13km (5:19min); Creek crossing on pink spray mark track
27	1881976	5682204	786	10.32 (5:28min); Junction of pink spray marked track just lost and Punchies, old vehicle tk
28	1881331	5682553	912	11.29km (5:46min); Creek crossing
29	1881148	5682981	969	11.94km (5:59min); Quarry on top of ridge, start of road
30	1880480	5683855	799	13.32km (6:20min); Quarry road junction with Clements Mill Rd
31	1879100	5683106	775	15.17km (6:44min); End, back at Te Iringa car park

Notes:

- GPS Garmin GPSMap 60csx
- WP = Waypoint as taken by GPS unit
- masl = metres above sea level