

STANTON MEMORIAL bluff walk

260 Series Map: Ohakune, 1:50,000 S20

Topo50 Map: BJ34-Mnt Ruapehu

How to get to START: Exit Taupo on SH1 down the lake to Turangi where there is a choice:

- Desert Highway (SH1) and turn off right on to SH46 for Rangipo
- Meet SH47 at a T-junction and then turn off SH47 on to SH48 signposted for Whakapapa and the Chateau, or
- In Turangi turn off SH1 on to SH41 on the right and then turn left off SH41 on to SH47 and proceed as above. (This is shorter)

Pass the Chateau on the left and continue up Bruce Road parking in the "Round the Mountain" car park on the right hand side at the Scoria Flats (**SM01** 1463 masl).

Rough description: This was an attempt to scout a new route to the Stanton Memorial on the high ridges from the Round-the-Mountain track (RMT) heading S to SSE, the RMT being followed for about 17min (1km) to the SW from Scoria Flats (**WP01**) This proved to be quite a short tramp but with some exciting terrain to cross and fantastic views to admire – however it would not be suggested as suitable for the faint hearted.

Detail: From the car park (**WP00** 1463masl) head off to the SW on the RMT as if going to Whakapapa. After about quarter of an hour where the track heads westwards (**WP01** 1457masl) head more or less due S towards the ridge ahead. Cross the ridge (**WP02** 1544masl) then head SE to cross the stream line (**WP03** 1489masl) in very rough terrain.

A SE heading was maintained to avoid the bluffs marked on the map but soon the going got quite hard with awkward footwork and relatively steep, rocky slopes. The 1500m contour was then followed to the SW in order to check if there was any way down from the ridge, over the stream ahead and up on to the next shelf area – this is the shelf where the memorial is to be found about another km to the SSW. However, around **WP04** 1601masl there was no safe way to proceed to the W or the S, the whole area being severely protected by bluffs. The route was now back uphill to the SE, over the ridge and down into the very steep valley virtually following the edge of the bluff – fantastic views available from a narrow cleft at **WP05** 1649masl – to meet up with the original route previously mapped at **WP06** 1701masl then across the stream line at **WP07** 1684masl in this very deep, highly eroded valley. This and the previous stream are tributaries of the Whakapapa Stream.

The edge of the bluffs



TTC tramper out-bluffed



Once over this stream the route heads uphill on a side more or less to the W then, from the crest (**WP08** 1704masl), heads SW working down-slope on to a shelf like feature. All of this is very rough going and then there is another steep descent that leads directly to the huge boulder on which the Stanton memorial is found.

Final descent to memorial



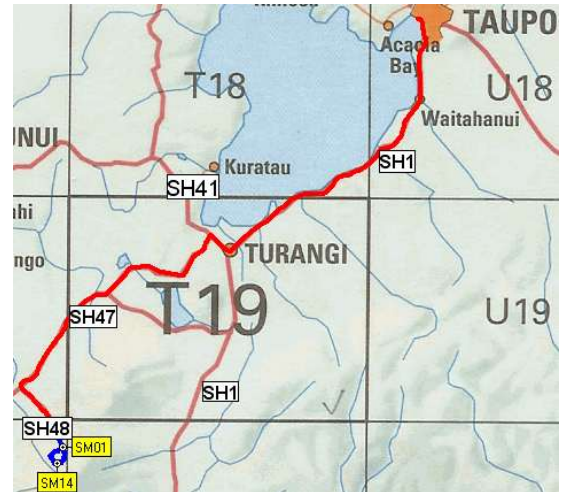
The plaque is now not easy to read. *Basically it is in memory of eighteen year old Warwick Stanton who perished on the mountain in August 1931 when the party of Auckland students was caught out by the weather, split up and Warwick died whilst trying to reach help.* This is difficult terrain in summer time and a vicious area during inclement weather in winter time.

From the memorial there is a choice of return routes: one heads due south down a very steep slope mapped as bluffs on the 50,000 scale topographic map. The footing is very loose in parts but the descent is quite safe if care is taken – this route is described in the original Stanton memorial write-up. The other alternative is as shown on the following map and leads back to Scoria Flats car park in less than two hours.

NZ Grid GPS: Geodetic Datum 1949

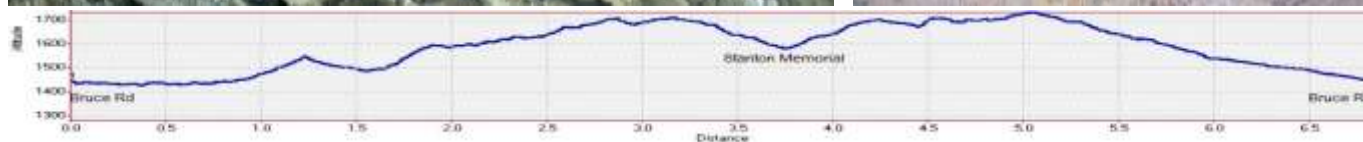
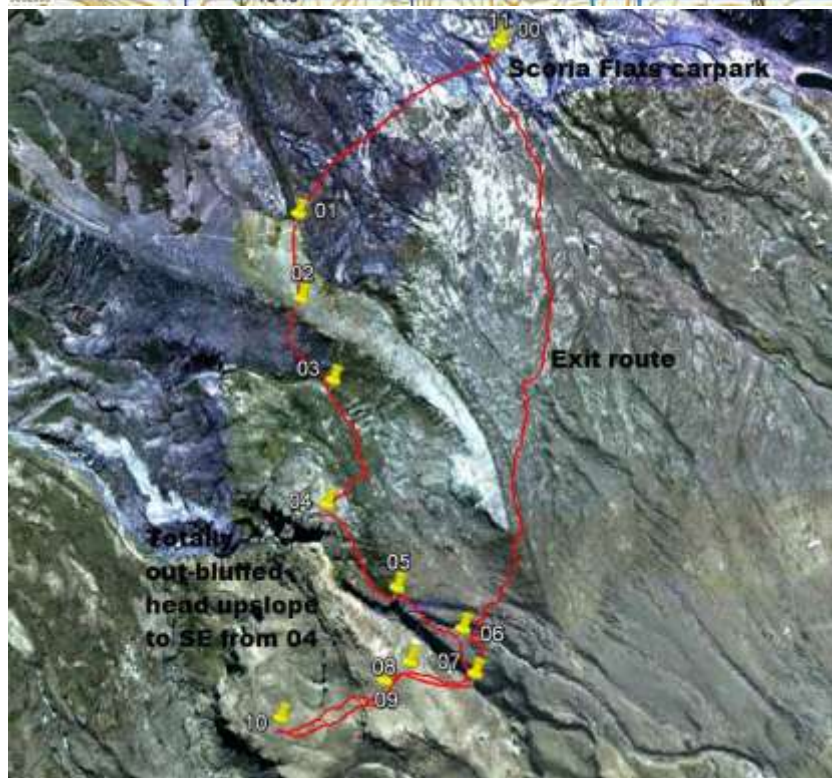
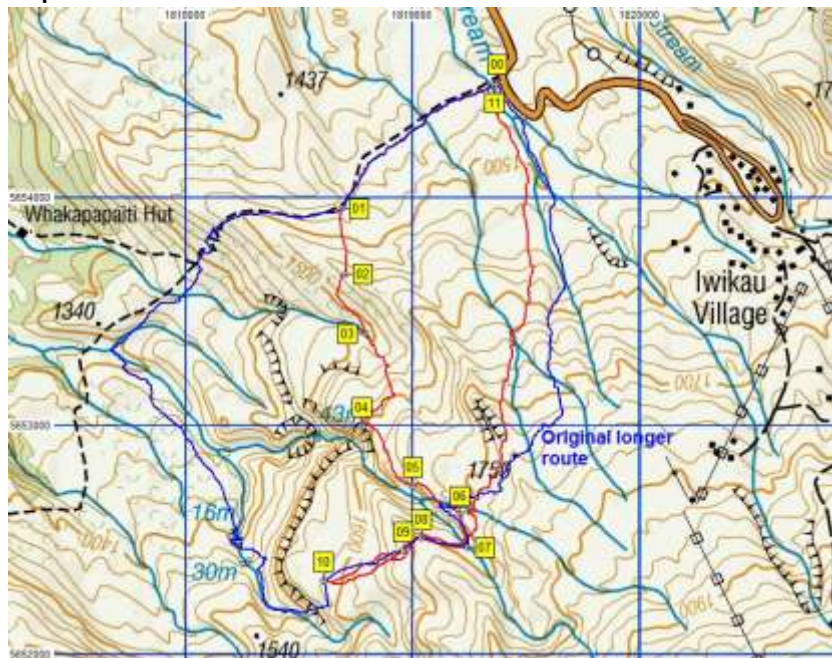
NZTM GPS: NZTM on WGS 84

Access



The access route can be seen as the red line above whilst the blue line is the route of the original tramp below the yellow car park waypoint with the lower yellow waypoint being the Stanton Memorial.

Map with GPS data



Waypoints – NZ Grid

Na...	Easting			Northing			Description	NZTM	
	00	01	02	03	04	05		Easting	Northing
00	2729460	6216364	1463	Park at Scoria Flats car park			1819376	5654507	
01	2728774	6215813	1457	12min; branch off left from the Round the Mountain track			1818690	5653955	
02	2728790	6215526	1544	22min; cross first gullied stream line			1818706	5653668	
03	2728878	6215263	1489	35min; cross second (larger) gullied stream line			1818795	5653405	
04	2728859	6214861	1601	1:12min; totally out-bluffed. Turn, head uphill to SE			1818776	5653003	
05	2729084	6214596	1649	1:30min; fantastic view down bluff through narrow chasm			1819002	5652738	
06	2729293	6214469	1701	1:46min; backtracked to meet known original route inwards			1819211	5652611	
07	2729327	6214328	1684	1:57min; major stream crossing in deeply incised valley			1819245	5652470	
08	2729124	6214371	1704	2:05min; on crest above steep slopes down to shelves to SW			1819042	5652512	
09	2729043	6214313	1691	2:07min; on cairned downslope leading to shelf above Stanton Memoria			1818961	5652455	
10	2728692	6214183	1582	2:40min; Stanton Memorial			1818609	5652324	
11	2729446	6216351	1460	4:26min; edge of the car park			1819363	5654494	

Notes: • GPS Garmin GPSmap 60CSx WP = Waypoint as taken by GPS unit masl = metres above sea level