

PUREORA and BOG INN HUT via LINK TRACK

260 Series Map: Whakamaru, T17

Topo50 Map: BF34 Benneydale, BF35 Whakamaru & BG35 Tihoi

How to get to START: Exit Taupo on SH1 North

- Near the top of the hill out of Taupo turn left into **Poihipi Road**
- Follow the road out past the Wairakei Forest then turn left into **Whangamata Road** following the signs for **Kinloch**
- Do **NOT** turn left at the next sign for Kinloch but go straight ahead till you reach a T-junction
- At the T-junction on **SH32** (Western Bay Road) turn right and proceed for about 1.5km and 32 minutes from start
- Turn left into **Kakaho Road** in 34 minutes and cross bridge over the Huruhurumaku stream, then the road becomes gravel (37 minutes)
- Pass signs for **Kakoha Forest Park** then go right at Y-fork, go straight at next T-junction (46 minutes) then down through some dips and bends. There are some signboards at about 51 minutes – go straight with some bends then a climb with a descent at about 55 minutes
- Car park for the **Link Track** at 57 minutes

Rough description: An easy to moderate, muddy, slightly tricky tramp of 5 hours using the Link Track which passes between Titiraupenga and Pureora then down to Bog Inn Hut in Kakaho Forest Park north west of Lake Taupo.

The tramp executed here was from the access road (**WP3**) up over Pureora and down to the Bog Inn Hut then out to another branch of the access road – hence your transport has to meet you at the exit car park (**WP20**).

This is not a walk on pumice deposits hence the soils are heavier and the drainage is poor leaving the track very muddy in parts, very eroded due to run off and a lot of nimble footwork is required over the eroded areas plus the extensive surface-root system of the trees.

It should be noted that this is a very active logging forest and care must be taken and roads are often closed due to felling activity, plus landmarks do vanish when clear felling has been carried out and new roads constructed for re-planting operations. Hence it is well worth using a GPS unit in conjunction with your map and the data supplied.

Detail: The access and exits roads, plus the alignment of the tramp, are shown on the map where:

- The exit road from the car park for Bog Inn to SH32 is shown and labelled
- The access road to the start of the walk is shown and labelled, and
- The approximate walking route shows WP003 and WP020

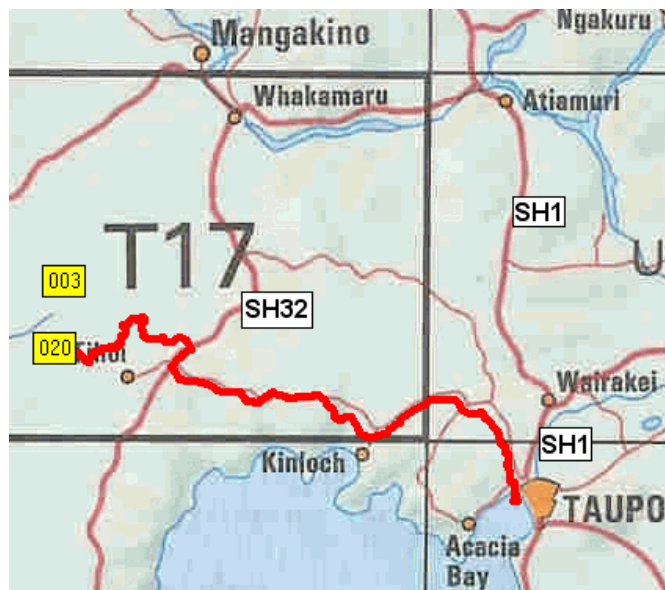
Pureora Trig



NZ Grid GPS: Geodetic Datum 1949

NZTM GPS: NZTM on WGS84

Access



The route can be traced above where the access road from SH32 can be seen in red as is the road from Taupo. More detail of the forest roads can be seen on the map below

Track start

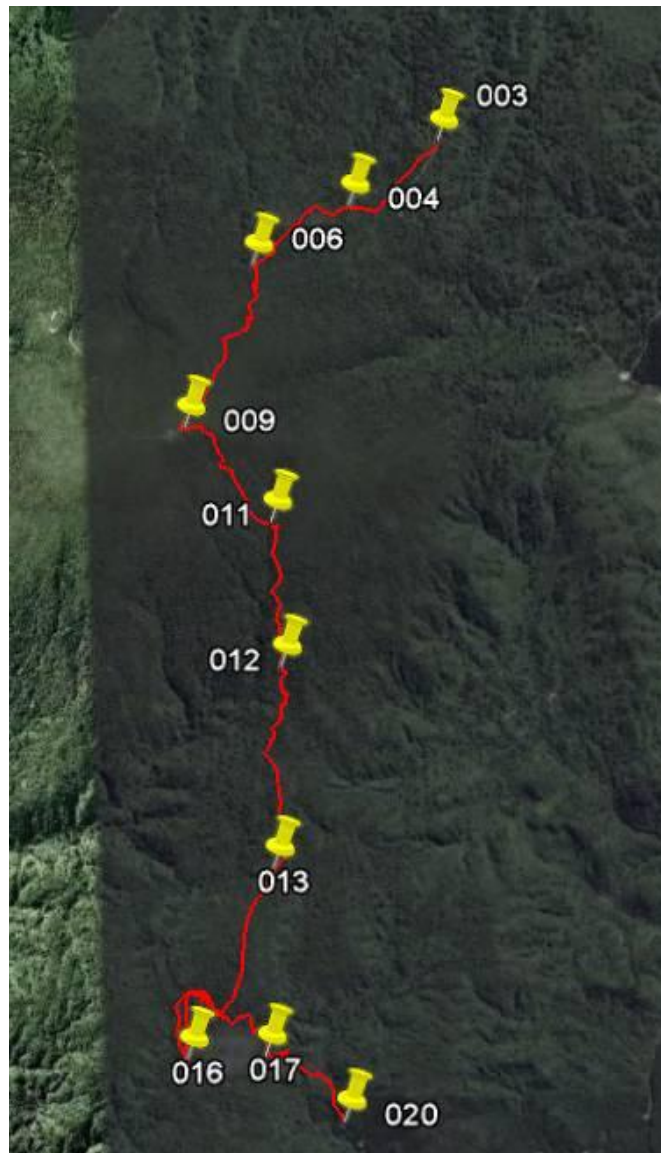
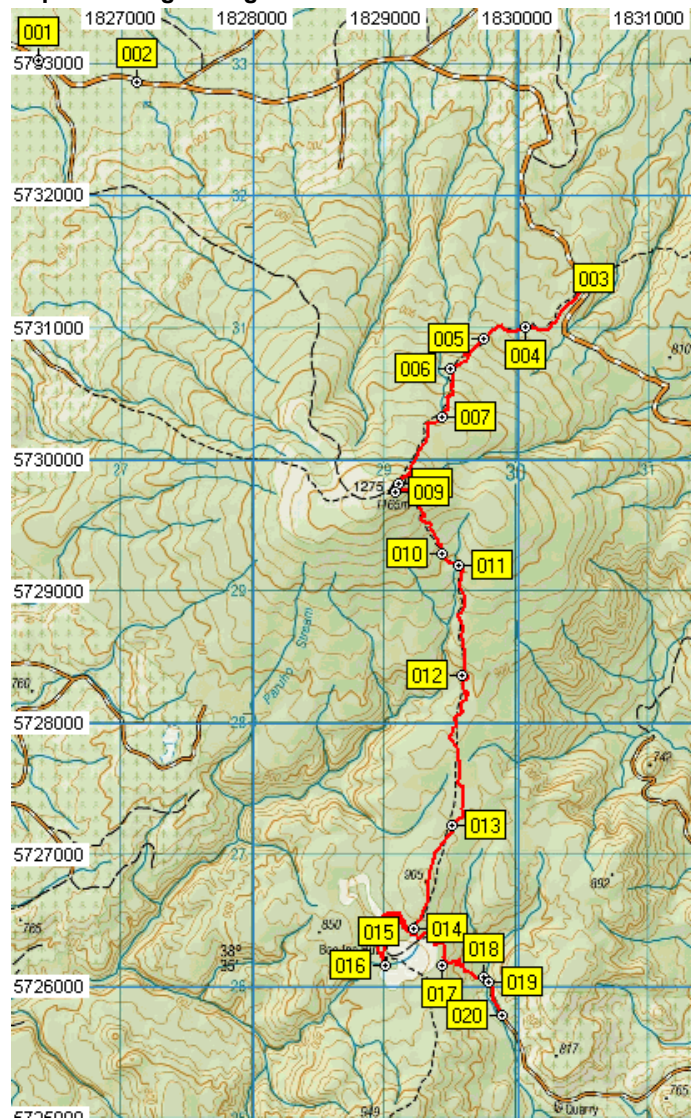


The track is NOT well used or generally well maintained though there are several extensive sections of boardwalk.

From the car park on the access road (**WP3**) proceed uphill in a SW direction and as indicated by the signboard clearly visible at the side of the gravel road. Note that the map shows the Link Track crossing the road at a slightly different place from the GPS record (**WP3**). The track is quite good for the first 20 minutes in the broadleaf forest then it becomes muddy and root infested – a good tea stop was located in beech forest after 45 minutes walking.

After about 55 minutes there is a large section of boardwalk, with steps, and another section is found after 1:10 minutes then in 1:30 minutes the boardwalk ends and one emerges into an open bush area from the dense forest (**WP8**). It is then a mere 5 minutes stroll to the crest of Pureora (**WP9**) with a wooden “trig” point (left) and a communications aerial. There is also a notice board indicating the start of the tracks to Bog Inn and the Toitoti Track (Refer Tramp P3); the alignment of the Toitoti track can be seen on the ground through the forest below you if the weather is clear.

Map and Google Image with GPS data



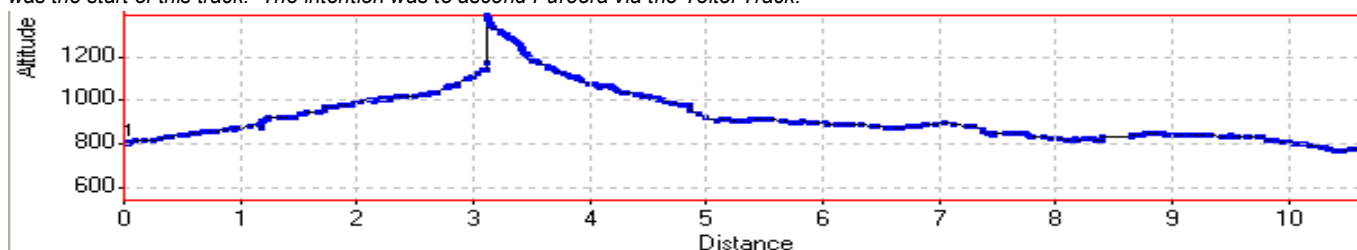
Waypoints – NZ Grid

Name	Easting	Northing	Alt(m)	Description
001	2736407	6295104	629	Junction with Quarry Road
002	2737161	6294942	662	Junction with "unknown" Road
003	2740624	6293438	803	Car Park for Link Track
004	2740100	6293079	855	20 m in up good to muddy track in Broadleaf to Bridge, then muddy
005	2739789	6292983	901	45 min walk, tea stop in Beech forest on muddy, root infested track
006	2739534	6292752	949	55 min walk, steps on boardwalk
007	2739474	6292391	1005	1:10 min, more boardwalk
008	2739138	6291889	1112	1:30min, end boardwalk then into open bush area
009	2739115	6291828	1141	1:35 min, trig point on Pureora + communications station
010	2739477	6291358	1097	2:10 min, +/- level area after "nasty" descent then cross stream
011	2739597	6291274	1059	2:15 min, stream flowing L to R
012	2739627	6290445	907	3:05 min, stream with slippery access both sides
013	2739552	6289303	871	3:35 min, Level, more open area
014	2739249	6288525	845	4:00 hrs, T-junction with Bog Inn 15 mins to the right
015	2738987	6288490	826	3:05 min, small bridge on pretty mucky, rough trail
016	2739030	6288242	822	4:10min, Bog Inn Hut
017	2739475	6288245	830	4:50 min, Weraroa junction with name board
018	2739780	6288149	774	5 hrs, steep descent to open area then parallel to stream
019	2739823	6288116	768	5:02 min, sign and bridge for Hauhungaroa Route then gravel road
020	2739916	6287867	765	5:05 min, Bog Inn carpark

NZTM

Easting	Northing
1826345	5732762
1827100	5732601
1830565	5731100
1830042	5730740
1829731	5730644
1829476	5730412
1829417	5730052
1829080	5729548
1829058	5729488
1829420	5729018
1829541	5728934
1829572	5728105
1829497	5726963
1829195	5726184
1828933	5726148
1828977	5725900
1829422	5725904
1829728	5725807
1829770	5725775
1829863	5725526

NB WPs 1 and 2 were taken whilst trying to find the end of the Toitoti Track but due to logging it could not be established at the time that WP1 was the start of this track. The intention was to ascend Pureora via the Toitoti Track.



As they say “it is all downhill” from here and the hard work of the day starts as the track is not well used and is much degraded in places though it is easy to follow the line of the track. It should be noted that the walking route is based on the GPS trace and not on the mapped footpath (Link Track) - this is shown as a relatively straight line on the map and the GPS records show the track is not always quite where it is plotted on the map – but the plotted track is good enough to allow safe walking.

There is a level area at 2:10 minutes after a “nasty” descent then a stream is crossed and 5 minutes later another stream crossing (stream flowing Left to Right) is met and this crossing is well off the plotted route of the track according to GPS records (according to the mapped track you do not cross this stream) – hence it is assumed that the track alignment was never good or has been changed. Another stream with rather slippery banks (both sides) is met in 3:05 minutes (**WP12**) and then in another 30 minutes a more level area is found (**WP13**). Thirty minutes from here there is a T-junction (**WP14**) with the right branch going to Bog Inn Hut and the left branch is the exit route to the car park. It should be noted that the map shows a loop in the track to Bog Inn Hut (**WP16**) whereas, in fact, there is a distinct T-junction. From WP14 to the Hut is a messy, wet, muddy 15 minutes and you know you are almost there when you cross a small wooden bridge.

This was the track – recently improved



Bog Inn hut



The hut is not quite palatial compared to many other huts but would be a haven on a day with inclement weather on this rather wet, miserable section of track. There are 4 beds, rudimentary furniture and a wood burning stove.

However, the area is so wet that dry firewood might not be easy to find and if you do plan to stop in Bog Inn Hut carrying a couple of fire-lighters might be a wise move. From the Hut it is another 15 messy minutes back to the T-junction (WP14) and on to the junction with the Weraroa Track after a total walking time of 4:50 minutes (**WP 17**).

Ten minutes after this junction there is a steep descent to an open area where you are parallel to the stream then two minutes later there is a bridge (**WP19**) and a sign for the Hauhungaroa Route and you come upon a gravel road which takes you to the car park (**WP20**) in about 5 minutes after a total walking time of 5 hours. Overall there is a 338 metres gain in altitude in reaching Pureora and an overall drop from the summit of 376 metres to the car park on the exit road.

Notes:

The GPS data contains information additional to that directly related to the walk described but the intention was to walk the Toitoti Track to Pureora (**WP9**) and come back down the Link Track to the access road (**WP3**). However, due to massive felling operations the start of the Toitoti track could not be located easily or quickly and the walk was re-routed as described.

Waypoints **1** and **2** were taken when trying to locate the correct turn-off for the Toitoti – Cabbage Tree Road and the only known reference point collected was **WP1** which was at the junction with Quarry Road. The map shows that a track goes off Quarry Road but this is NOT the Toitoti Track. At the time, confusion existed and plans were changed to avoid any possibility of going wrong and wasting time. AN updated map with the roads named following a GPS check is presented in the next tramp describing the Toitoti Track used for the ascent of Pureora.

Notes:	<ul style="list-style-type: none"> • GPS Garmin Summit • WP = Waypoint as taken by GPS unit • masl = metres above sea level (<i>as recorded by GPS unit</i>) 	<p>Total Distance : 10,892 Km Minimum Altitude : 765 Meters Maximum Altitude : 1377 Meters</p>
--------	--	--